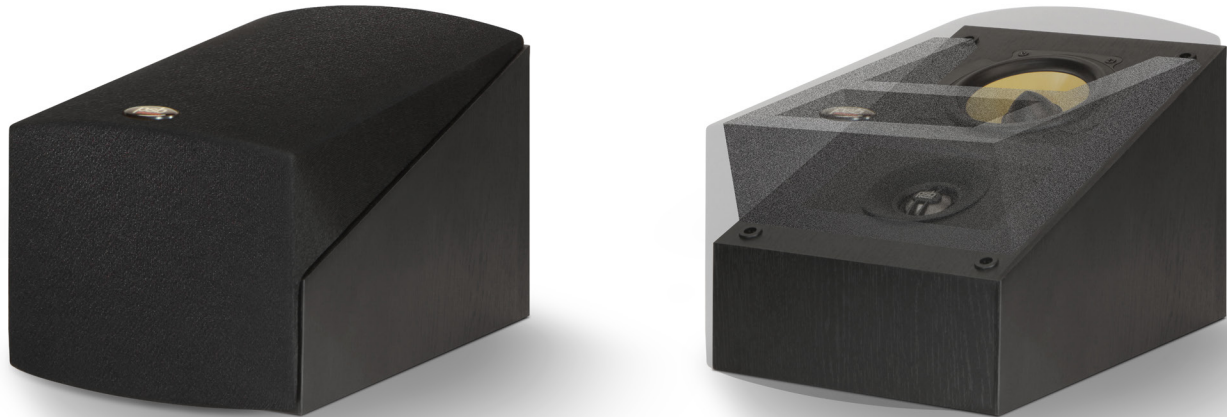


# Imagine™ XA Dolby Atmos® Module Speaker

**psb**  
**SPEAKERS**



Take your home theatre experience to new heights with the Imagine XA Dolby Atmos® Speaker Module. Specifically designed to be the height speaker in a Dolby Atmos enabled system, the Imagine XA can be added to any existing floor-standing or bookshelf speaker to create a true, multi-dimensional sonic atmosphere that lets you feel all the excitement of your music and movies. Hear the rush of a jet fighter fly over you and the swift breeze of the wind through a high-up tree with lifelike detail—just like you are there.

## ADD DOLBY ATMOS TO YOUR EXISTING HOME THEATRE SYSTEM

The Imagine XA is purpose-built to fit on top of PSB's Imagine X Series floor-standing and bookshelf speakers, creating a 5.1.2 to 7.1.4 or beyond Dolby Atmos enabled system from your existing home theatre setup. It's also well suited to sit atop of any other quality speaker brand, or wall-mounted as a stand-alone Dolby Atmos enabled speaker, and adds a new overhead audio dimension to music and movie soundtracks.

## ADVANCED VERTICALLY-FIRING DRIVER ARRAY

Working with Dolby, and using advanced acoustic research uncovered at Canada's famous National Research Council, PSB developed the Imagine XA with a very precise frequency and directivity response that perfectly matches Dolby's specs. Not only does this mean the Imagine XA's advanced driver technology and crossover design will produce a lifelike Dolby Atmos experience, it also integrates perfectly with almost any home theatre system for the best possible 3D imaging.

## FEEL EVERY DIMENSION™

Enter a new world of sound with Dolby Atmos. It transports you from an ordinary moment into an extraordinary experience with moving audio—sound that fills your room and flows all around you with breathtaking realism to create a powerfully moving entertainment experience.

- Custom-designed drivers for each model utilizing technology from PSB flagships
- Tweeters are titanium dome with ferrofluid and neodymium magnet structure with heat sink
- Woofers are clay/ceramic reinforced injection molded polypropylene cones
- Designed sonically to integrate with other Imagine X Series speakers
- Multi-functional and designed with anti-slip strips to sit atop any quality speaker brand
- Final voicing performed by Paul Barton at Canada's famed NRC
- Five-way gold-plated binding posts
- Wall mountable (bracket included)

# Imagine XA Dolby Atmos Module Speaker



<b>Frequency Response</b>	(Anechoic Chamber)
On Axis @ 0°±3dB	100-23,000Hz
LF Cutoff -10dB	60Hz
Dolby Atmos Certified	Yes
<b>Sensitivity</b>	(1W (2.83V) @ 1M, IEC-Filtered pink noise, C-weighted)
Anechoic Chamber	85dB
Listening Room	87dB
<b>Impedance</b>	
Nominal	8 Ohms
Minimum	4 Ohms
<b>Input Power</b>	(RMS, Clipping <10% Time)
Recommended Program	10-80 Watts
	60 Watts
<b>Acoustic Design</b>	
Tweeter (Nominal)	1" (25mm) titanium dome with ferrofluid Neodymium magnet
Woofer (Nominal)	4" (102mm) Clay/Ceramic reinforced polypropylene cone Rubber surround Turbo magnet
Design Type	Sealed
<b>Size (W x H x D)</b>	(Gross Dimensions)
	6 3/4 x 6 1/2 x 10 1/2"*
	165 x 267 x 171mm
<b>Weight</b>	
Net	6.5lb (2.95kg)/each*
Shipping	16lb (7.26kg)/pair*
<b>Finish</b>	
	Black ash

\* Non-metric measurements are approximate.

REAL SOUND for REAL PEOPLE  
[www.PSBspeakers.com](http://www.PSBspeakers.com)